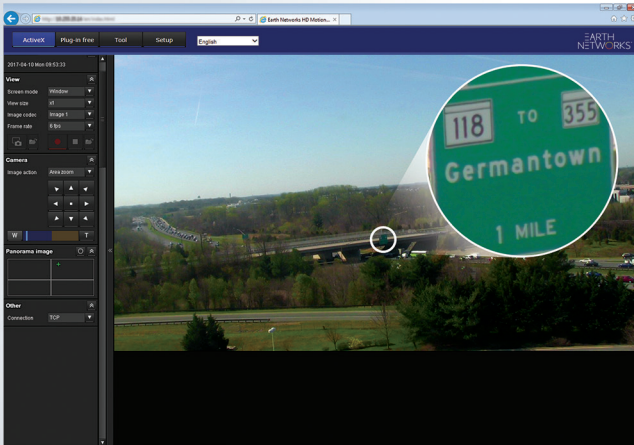


EARTH NETWORKS PTZ CAMERA SOLUTION

PAN-TILT-ZOOM (PTZ) HD CAMERA

The ultimate in monitoring solutions, the PTZ high-definition motion camera combined with an intuitive web-based camera control interface provides you with a bird's eye view to monitor live weather events and daily operations. Once installed and connected to your local network*, you have total access to the camera control system and the ability to scan the horizon, alter the viewing angle, change the zoom level and more!



KEY FEATURES:

- **Laser focus**
- **Axis Sharpdome technology with Speed Dry**
- **Lightfinder and WDR – Forensic Capture**
- **Zipstream**
- **HDTV 1080p and 30x optical zoom**

Now you can view images in real-time, enabling you to monitor critical assets while enhancing your visibility of the community and infrastructure during severe weather and throughout the day.

* Existing internet connection required.

PTZ DOME NETWORK CAMERA SPECIFICATIONS (AXIS Q6155-E)



| | |
|------------------------------|--|
| Frame Transfer | Up to 25/30 fps (50/60 Hz) in 1080p Up to 50/60 fps (50/60 Hz) in 720p |
| Electronic Shutter Speed | 1/60000 s to 2 s |
| Lens Type | 4.3–129 mm, F1.6–4.7 Horizontal field of view: 66.7° –2.36° Vertical field of view: 39.5° –1.37° Laser focus, auto-iris |
| Pan/Tilt/Zoom | Pan: 360° endless, 0.05°–700°/s Tilt: +20 to -90°, 0.05°–500°/s Zoom: 30x optical, 12x digital, total 360x zoom |
| Video compression | H.264 (MPEG-4 Part 10/AVC) Baseline, Main and High Profiles Motion JPEG |
| Resolution | 1920x1080p (HDTV 1080p) to 320x180 |
| Power Requirements | IEEE 802.3 at compliant (PoE+) Class 4, AC 24 V (included) |
| Power Consumption | Typical 11 W, max 25 W |
| Dimensions | 274 x 165 x 165 mm (10 13/16 x 6 1/2 x 6 1/2 in) |
| Weight of Camera and Housing | 2.9 kg (6.4 lb) |
| Operating Temperature Range | -40°F to 140 °F |